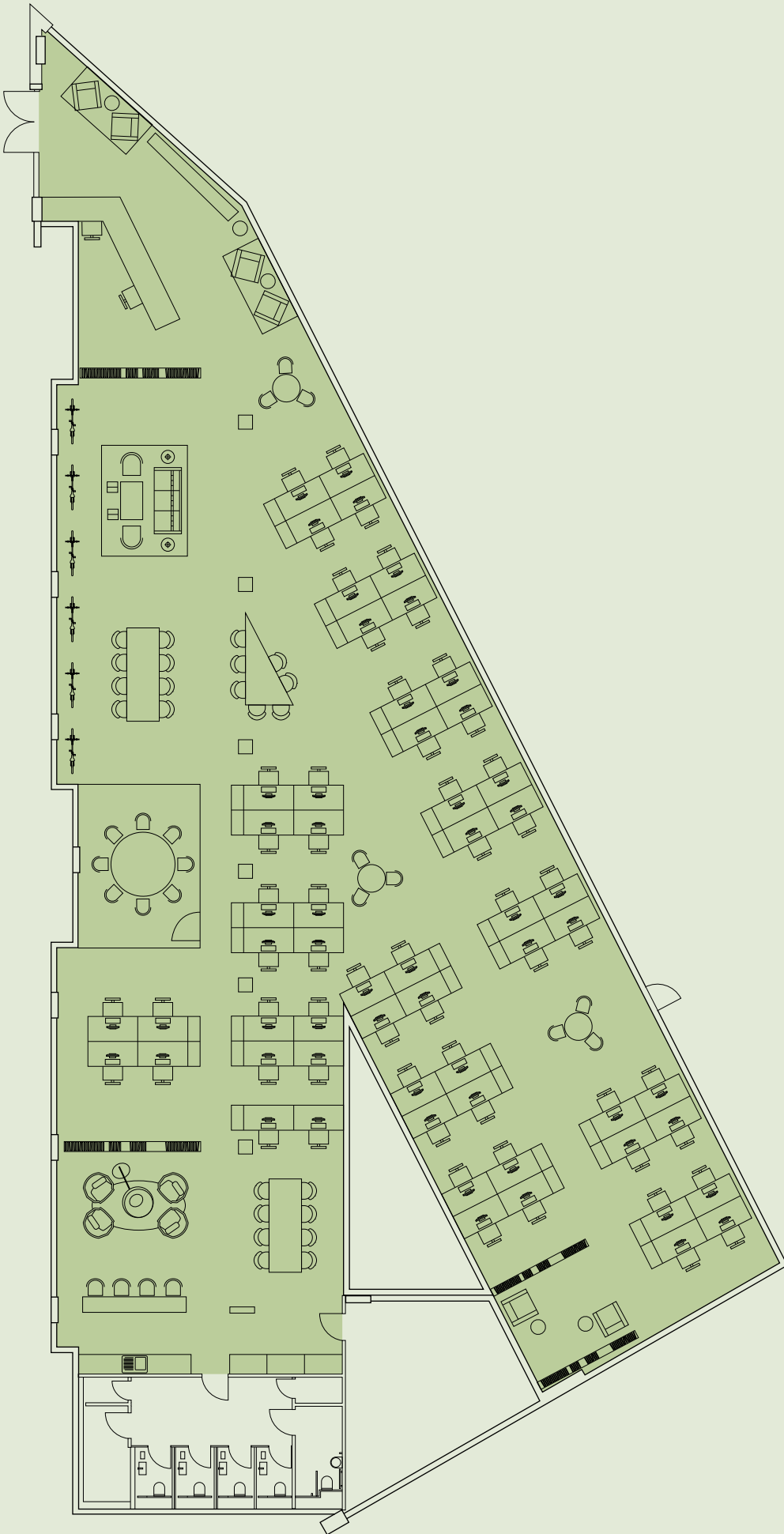


FLOORPLAN
(APPROXIMATE NIA)
6,440 sq. ft — 598.3 sq. m
IPMS3
AVAILABLE ON REQUEST





INDICATIVE LAYOUT

Open work stations: 58

Reception work stations: 2

TOTAL: 60

Reception area: 4

Break-out space: 33

Meeting room (8 person): 1

